

Banding Snippet

Movement of birds in the lower Blue Mountains, NSW

Banding commenced in the 1970s at two sites in the lower Blue Mountains: Blue Gum Swamp Creek and Shaw's Creek. Shaw's Creek was later terminated while banding at Blue Gum Swamp Creek continued to collect data intermittently to the present day.

Additional banding sites at Frazer's Creek, Cripple Creek and Ellison Reserve were started in 1989 and continued for 3

years. Banding at these sites was re-commenced in 2017 with Fitzgerald Creek being added. Banding at all these sites is still in operation.

Over the years, movements of a number of different species were recorded. This article collates all known movements to date. Some have been published in Hardy and Farrell (1990) (denoted with *) while some others have been reported in Recovery Roundup.

Movements greater than 7 kms. (BGSC = Blue Gum Swamp Creek; WDNR = Windsor Downs Nature Reserve; ABNR = Agnes Banks Nature Reserve)

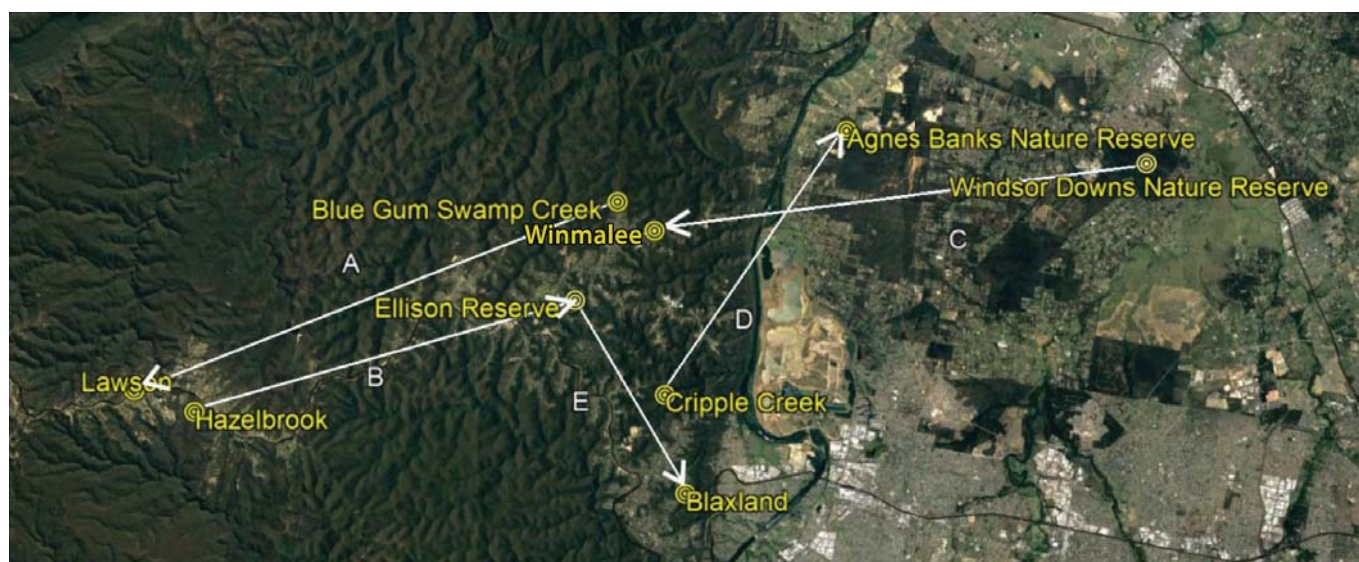


Image courtesy of Google Earth

| Bird | Species | Band No. | Banded | Date | Recovered | Date | Time Elapsed | Distance |
|------|--------------------------|-----------|-----------------|----------|-----------------|---------|--------------|----------|
| A | Eastern Yellow Robin* | 022-71012 | BGSC | 10.1. 85 | Lawson | 6.7. 86 | 1y5m | 17.9km |
| B | Australian Magpie | 090-64306 | Hazelbrook | 12.2.88 | Ellison Reserve | 23.4.88 | 2m | 13km |
| C | Fuscous Honeyeater | ? | WDNR | ? | Winmalee | ? | ? | 17km |
| D | White-cheeked Honeyeater | 037-72412 | Cripple Creek | 6.12.20 | ABNR | 16.4.23 | 2y4m | 10.7km |
| E | Satin Bowerbird | 091-17774 | Ellison Reserve | 8.3.88 | Blaxland | 5.5.88 | 2m | 7.48km |

A. Found by public, killed by a cat.

B. Banded as a nestling, re-trapped at Ellison Reserve.

C. Banded at Windsor Downs Nature Reserve with an additional pink colour band, photographed at Winmalee at a bird bath.

D. Banded at Cripple Creek, re-trapped at Agnes Banks Nature Reserve.

E. Found dead by public.

Movements greater than 0.5 kms and less than 7 kms.

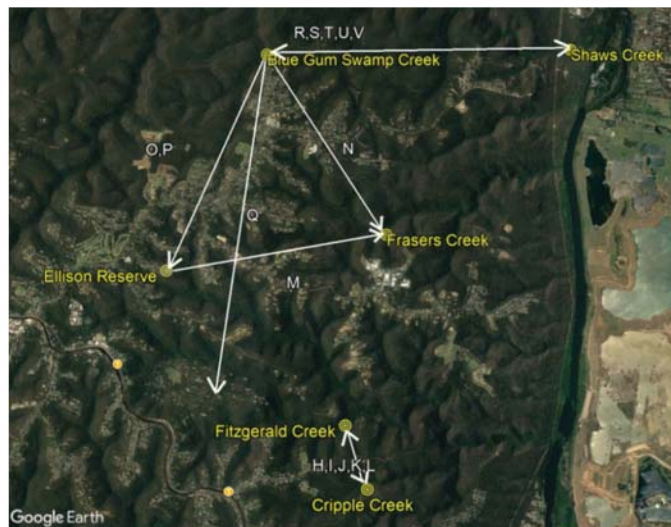


Image courtesy of Google Earth

Rufous Fantail "Q" sporting a green colour band.



Photograph courtesy of David Baldwin

| Bird | Species | Band No. | Banded | Date | Recovered | Date | Time Elapsed | Distance |
|------|---------------------------|-----------|------------------|----------|------------------|----------|--------------|----------|
| F | Golden Whistler* | 032-66507 | BGSC | 30.12.86 | Winmalee | 1987 | ~1y | ~2km |
| G | Lewin's Honeyeater* | 040-70960 | BGSC | 15.4.79 | Winmalee | 11.10.80 | 1y5m | ~2km |
| H | Red-browed Finch | 01C-07636 | Cripple Creek | 4.2.18 | Fitzgerald Creek | 19.5.19 | 1y3m | 0.72km |
| I | Golden Whistler | 037-47908 | Cripple Creek | 6.10.19 | Fitzgerald Creek | 13.9.20 | 11m | 0.72km |
| J | Eastern Spinebill | 01C-07461 | Fitzgerald Creek | 22.10.17 | Cripple Creek | 21.7.19 | 1y9m | 0.72km |
| K | Eastern Spinebill | 01C-07468 | Fitzgerald Creek | 22.10.17 | Cripple Creek | 6.10.19 | 1y11m | 0.72km |
| L | Eastern Spinebill | 01C-28284 | Cripple Creek | 16.8.20 | Fitzgerald Creek | 20.6.21 | 10m | 0.72km |
| M | Eastern Spinebill | 015-72348 | Ellison Reserve | 19.3.88 | Frasers Creek | 10.1.89 | 1y7m | 3.35km |
| N | Crested Shrike-tit | 030-37857 | BGSC | 30.12.79 | Frasers Creek | 17.1.89 | 9y1m | 3.38km |
| O | Striated Thornbill | 014-85642 | BGSC | 15.6.86 | Ellison Reserve | 9.7.88 | 2y | 3.69km |
| P | Eastern Spinebill | ? | BGSC | ? | Ellison Reserve | ? | ? | 3.69km |
| Q | Rufous Fantail | ? | BGSC | ? | Fitzgerald Creek | 19.10.22 | ? | 5.27km |
| R | Lewin's Honeyeater* | 040-70974 | BGSC | 27.4.80 | Shaw's Creek | 13.9.80 | 5m | 5km |
| S | Yellow-tufted Honeyeater* | 031-91930 | BGSC | 2.2.80 | Shaw's Creek | 4.9.80 | 7m | 5km |
| T | Yellow-tufted Honeyeater* | 031-41982 | Shaw's Creek | 1.12.79 | BGSC | 17.2.80 | 2m | 5km |
| U | New Holland Honeyeater* | 031-41990 | Shaw's Creek | 1.12.79 | BGSC | 20.1.80 | 1m | 6km |
| V | Brown-headed Honeyeater* | 022-35101 | Shaw's Creek | 29.4.78 | BGSC | 18.8.80 | 2y6m | 7km |

F. Banded at Blue Gum Swamp Creek, band recovered from dismembered pieces of bird – specific location not recorded

G. Banded at Blue Gum Swamp Creek, found dead – specific location not recorded

H. Banded at Cripple Creek, re-trapped at Fitzgerald Creek

I. Banded at Cripple Creek, re-trapped at Fitzgerald Creek once and then re-trapped at Cripple Creek twice

J. Banded at Fitzgerald Creek, re-trapped once at Cripple Creek

K. Banded at Fitzgerald Creek, re-trapped at Cripple Creek seven times

L. Banded at Cripple Creek, re-trapped at Fitzgerald Creek

M. Banded at Ellison Reserve, re-trapped at Frasers Creek

N. Banded at Blue Gum Swamp Creek, re-trapped at Frasers Creek

O. Banded at Blue Gum Swamp Creek, colour bands sighted at Ellison Reserve, colour combination recorded

P. Banded with additional green colour band at Blue Gum Swamp Creek sighted at Ellison Reserve

Q. Banded with additional green colour band at Blue Gum Swamp Creek and photographed at Fitzgerald Creek (see photo)

R. Banded at Blue Gum Swamp Creek, re-trapped at Shaw's Creek

S. Banded at Blue Gum Swamp Creek, re-trapped at Shaw's Creek

T. Banded at Shaw's Creek, re-trapped at Blue Gum Swamp Creek

U. Banded at Shaw's Creek, re-trapped at Blue Gum Swamp Creek

V. Banded at Shaw's Creek, re-trapped at Blue Gum Swamp Creek

*Hardy, J.W and Farrell, J.R. (1990). A bird banding study in the Blue Mountains, New South Wales. 1. An overview. *Corella* 14: 1–15.

Compiled by Jeremy Webb,
Werrington Downs, NSW