

Fairy Prion

Pachyptila turtur

Species No.: 83

Band size: 06 IN

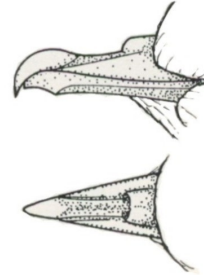
Adult,
dorsal



Adult,
ventral



Adult,
head



Side & dorsal view
line drawings of bill
by L.S. Hall.
From *Bird in the Hand* -
Editor S.G. Lane, 1974

30 mm

Identification:

Distal half of tail has a black-brown band on t1 to t4, but suffused on t5 & t6;
Length and width of bill (see illustrations above).

Morphometrics:

	Adult Male	Adult Female
Wing:	170 – 189 mm	170 – 188 mm
Tail:	79.7 – 96.7 mm	80.6 – 94.5 mm
Bill length:	20.4 – 24.3 mm	19.4 – 23.4 mm
Bill width:	9.2 – 10 mm	9 – 10.3 mm
Tarsus:	30.4 – 36.5 mm	29.5 -37.9 mm
Toe:	36.4 – 42.5 mm	35.9 – 42.6 mm
Weight:	88 – 178 g	98.5 – 171 g

Ageing:

Breeding adults return to nest sites in late August to early September;
Juveniles (1) fledge and leave breeding areas in late February – early March;
Age at first breeding 4 – 5 years, so age breeding birds (4+).

Sexing:

No sexual dimorphism in size or plumage;
Both sexes incubate.