

## SEABIRD ISLANDS

No. 93

## Dannevig Island, Glennie Group, Victoria

**Location:** 39°06'S., 146°19'E.; within the Glennie Group, to the west of Wilsons Promontory, Victoria, 7.25 km to the nearest mainland.

**Status:** Established as a sanctuary under the Game Act (1896), the island is now part of Wilsons Promontory National Park, controlled by the National Parks Service (Vic.); camping is not allowed.

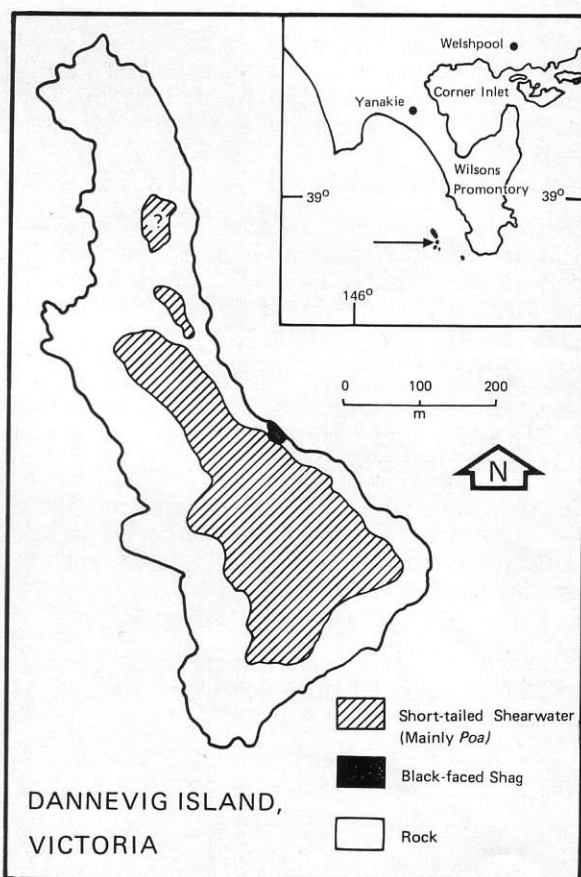
**Description:** About 19.6 ha; this narrow island (390 m at the widest point) is steep-sided, having a small, flatter area at the southern end. The island extends some 960 m in length and is predominantly of bare rock on the western side, and on the northern and southern ends. *Poa poiiformis* tussock is the main vegetation type, though this is often on shallow soil. Species within the community include *Bulbine bulbosa*, *Tetragonia implexicoma*, *Correa alba* and *Alyxia buxifolia*. *Disphyma australe* is the dominant, but diffuse, species on the western side and *Salicornia quinqueflora* is found near the northern end. Granite sheets and boulders occur over the whole island, and these are generally without plant cover. Soil depth is usually minimal<sup>2,3,6</sup>.

**Landing:** Onto rocks, governed by wind and swell.

**Ornithological History:** S. G. Lane and H. Bat-tam<sup>4,5</sup> visited the island in November 1978 and 1979, and supplemented earlier details given by M. E. Gillham who was there in 1959<sup>2,3</sup>. We were on the island briefly on 17 January 1980.

## Breeding Seabirds and Status

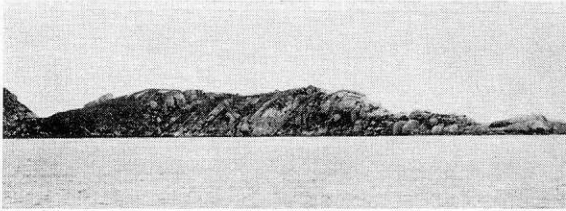
*Eudyptula minor* Little Penguin — Gillham<sup>2</sup> recorded these breeding as did Lane<sup>4</sup>. No esti-



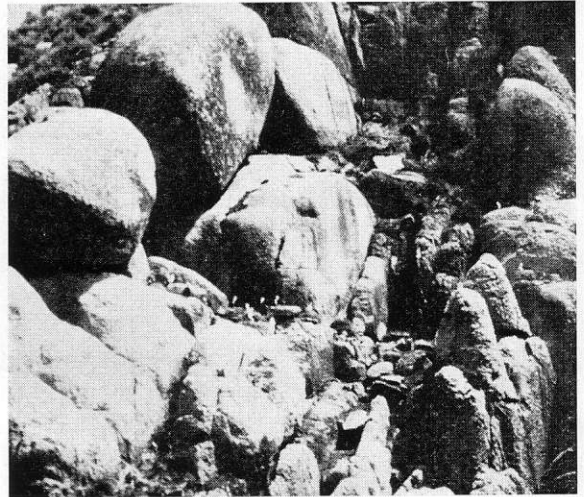
mates of the population size are available but few burrows were found and penguins apparently use rock crevices and overhangs for most nest sites.

*Pachyptila turtur* Fairy Prion — Three adults were found, each incubating an egg, on 24 November 1978<sup>4</sup>, and we found dead birds.

*Puffinus tenuirostris* Short-tailed Shearwater — Nesting burrows were found only under *Poa*



- Dannevig Island (looking south-west) with part of Citadel Island in the background at left.



- The shag colony near the centre of the western side.

Photo: H. Battam.

tussock. Gillham<sup>2</sup> gave an estimate of 2 000-3 000 burrows, considering that burrow distribution was limited by suitable soil depth. The product of burrow density and burrowed area suggested that the island held some 44 600 burrows in 1980, mainly on the southern end<sup>6</sup>.

*Pelecanoides urinatrix* Common Diving-Petrel — Gillham<sup>2</sup> recorded several hundred burrows in 1959. Lane<sup>4</sup> found a bird in a burrow in 1978, and four nestlings starting to feather, on the east side, in 1979 (pers. comm.).

*Leucocarbo fuscescens* Black-faced Shag — About 30 birds were on nests in November 1979<sup>5</sup>, and young were still present during our visit in January 1980.

*Cereopsis novaehollandiae* Cape Barren Goose — Gillham<sup>2</sup> noted that geese bred on the island. Dorward<sup>1</sup> recorded three pairs in 1964 and we saw five during our visit.

*Haematopus fuliginosus* Sooty Oystercatcher — Recorded by Lane and Battam (pers. comm.) in 1979; we considered that the island held at least four pairs.

*Larus novaehollandiae* Silver Gull — About 10-12 pairs were breeding in 1978<sup>4</sup> and 1980.

*Larus pacificus* Pacific Gull — Lane (pers. comm.) found a nest in November 1979 and we thought that at least 20 pairs were breeding in January 1980.

#### Factors Affecting Status

Soil depth limits burrowing species, and predation by Pacific Gulls may affect prions and petrels.

#### Other Seabirds Recorded

Nil.

#### Banding

24 November 1978, 10 November 1979.

*P. turtur* — 9 "adults".

*P. urinatrix* — 1 "adult".

#### Bibliography

1. Dorward, D. F. (1967), 'The status of the Cape Barren Goose *Cereopsis novaehollandiae*', *Bull. int. Comm. Bird Preserv.* 10:56-71.
2. Gillham, M. E. (1961), 'Plants and seabirds of granite island in south-east Victoria', *Proc. R. Soc. Vict.* 74:21-35.
3. Gillham, M. E. (1962), 'Granite islands of south-east Victoria as a seabird habitat', *Proc. R. Soc. Vict.* 75:45-63.
4. Lane, S. G. (1979), 'A visit to islands of Wilsons Promontory, Victoria', *Corella* 3:29-30.
5. Lane, S. G. (1980), 'Black-faced Shags breeding on islands off Wilsons Promontory, Victoria', *Aust. Bird Watcher* 8:167-168.
6. Norman, F. I., R. S. Brown and D. M. Deerson (1980), 'The flora and avifauna of Dannevig, Norman and Wattle Islands, Wilsons Promontory, Victoria', *Victorian Nat.* (in press).

Date compiled: 7 April 1980.

F. I. Norman, R. S. Brown and D. M. Deerson, Arthur Rylah Institute for Environmental Research, Fisheries and Wildlife Division, 123 Brown Street, Heidelberg, Vic., 3084.