

SEABIRD ISLANDS

No. 23

Stack Islet, New South Wales

Location: 34°38' S., 150°52' E.; at the mouth of the Minnamurra River, 5 km north of Kiama, N.S.W.

Status: Crown Land.

Description: Roughly rectangular, with precipitous sides except at the western end which rises steeply to a plateau about 100m long by about 75 m at the widest and sloping from some 15 m at the western end to 30 m at the eastern side. The rather heavy loam soil is well covered with grass and low shrubs mainly *Lantana camara* and African Boxthorn *Lycium serocissimum*. A narrow, wave-cut rock platform surrounds the "stack".

Access: Possible by wading the river-entrance sandbar, in suitable conditions, at low tide.

Ornithological History: There are two known visits by ornithologists — H. Battam and B. Jones visited the islet for about one hour on 22 February 1969 and found one nesting Wedge-tailed Shearwater; S. G. and L. F. Lane spent half an hour on the islet on 12 April 1973 and found three nestlings.

Breeding Seabirds and Status

Puffinus pacificus Wedge-tailed Shearwater — The shallow soil restricts burrow space but a few pairs may breed each year with occasional success. On 12 April 1973, well-developed nestlings were found in three burrows, two burrows were empty and three others freshly dug. Probably present to breed from August to May. Estimated 10-15 breeding pairs.

Factors Affecting Status

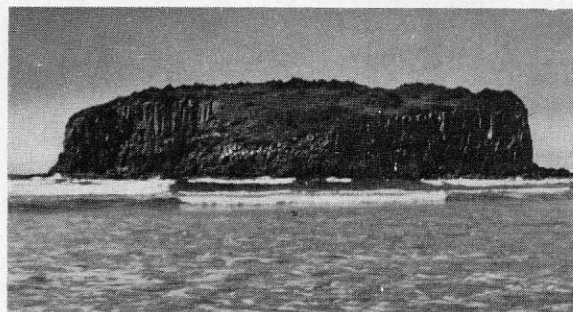
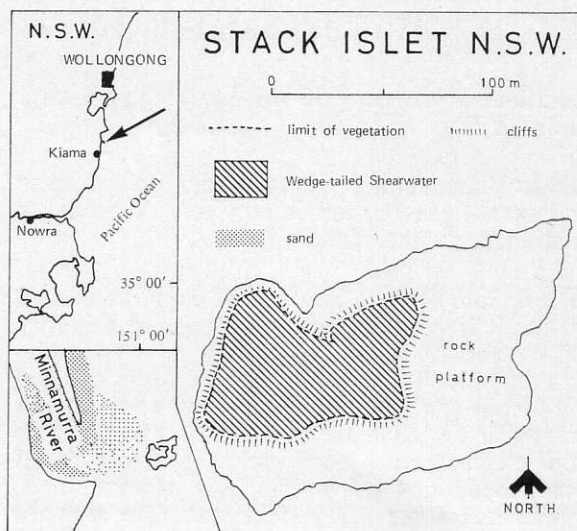
The exotic lantana and boxthorn plants may affect the breeding shearwater numbers, particularly if they spread further.

OTHER VERTEBRATES

None recorded.

Other Seabirds Recorded

Phalacrocorax melanoleucos Little Pied Cormorant
Egretta sacra Reef Heron



● Stack Islet (looking east).

Photo: S. G. Lane

Banding

First banding 12 April 1973.
P. pacificus—3 nestlings.

Bibliography

Nil.

Acknowledgements

I wish to thank Mr S. G. Lane for details of his visit.

Date compiled:
4 January 1976

H. Battam,
3 Alpine Place,
Engadine, N.S.W.