

TREECREEPERS



• *Brown Treecreeper (male) at nesting hollow.*

Photo: K. A. Hindwood

Treecreepers *Climacteris* spp.

The plumage differences between the sexes may not be easily seen in the field, but are definite in the hand. The ageing characters given are slight and need confirmation. There may be other characters, especially in the colours of iris, bill and legs, and any information on these would be welcome. It is also possible that sex differences appear before the immature plumage is fully replaced, in which case an indication of both age and sex could be obtained.

Drawings by D. Milledge

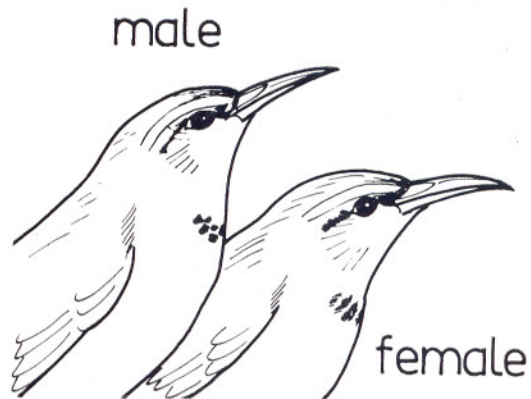
BROWN TREECREEPER

Climacteris picumnus

Adult male: Faint blackish markings in centre of upper breast.

Adult female: Faint reddish markings in centre of upper breast.

Immature: Resembles adult, but stripes on underparts ill defined. Sides of breast and undertail coverts dull rufous.



BLACK TREECREEPER

Climacteris melanota

This is the northern form of *C. picumnus* and has the same sex differences. Nothing has been recorded on the immature plumage of this species.

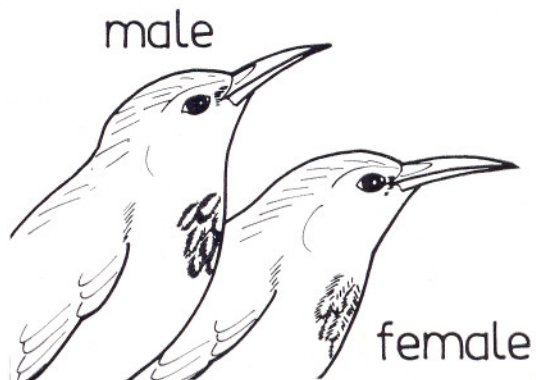
RUFOUS TREECREEPER

Climacteris rufa

Adult male: Feathers in centre of upper breast dull white edged with black.

Adult female: Feathers in centre of upper breast dull white edged with rust red.

Immature: Secondary coverts tipped rufous. Band on wing and plumage generally more rufous than adult.



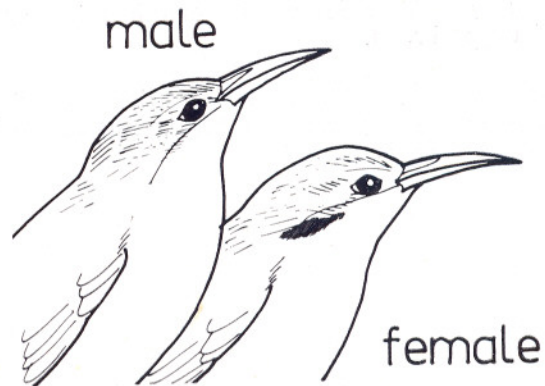
WHITE-THROATED TREECREEPER

Climacteris leucophaea

Adult male: No chestnut spot on side of head below ear coverts.

Adult female: Chestnut spot on side of head, between the grey-brown ear coverts and white throat.

Immature: Rump chestnut.



LITTLE TREECREEPER

Climacteris minor

This is the northern form of *C. leucophaea* and has the same sex differences. The immature has a reddish rump.

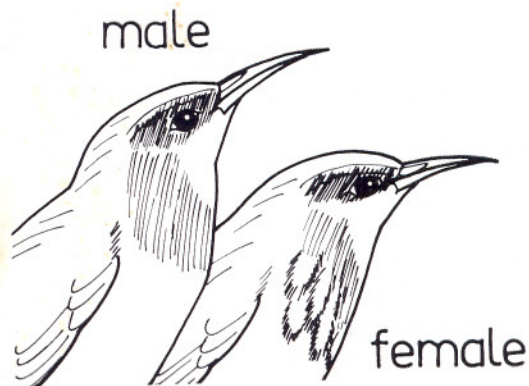
RED-BROWED TREECREEPER

Climacteris erythroptis

Adult male: Lores, superciliary stripe, and area below eye rusty red. Upper breast plain, buffy grey.

Adult female: Lores superciliary stripe, and area below eye deep reddish brown. Upper breast streaked rust with pale whitish centres to feathers.

Immature: Greyish brown round eyes, not rust red. Underparts greyish brown, unstreaked.



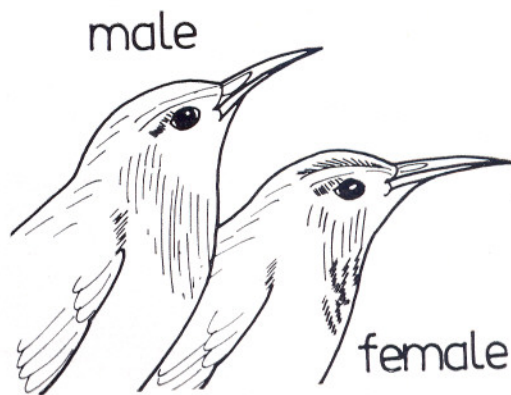
WHITE-BROWED TREECREEPER

Climacteris affinis

Adult male: Eyebrow white. Breast pale greyish brown.

Adult female: Narrow rust red line above white eyebrow. Feathers in centre of upper breast dull white, edged with pale rust brown.

Immature: Nothing recorded.



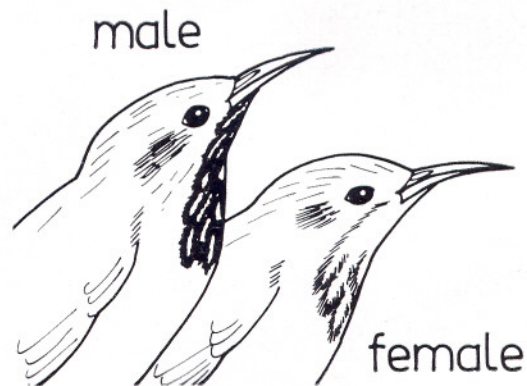
BLACK-TAILED TREECREEPER

Climacteris melanura

Adult male: Throat and upper breast black, streaked with white.

Adult female: Throat white. Upper breast white streaked with rufous.

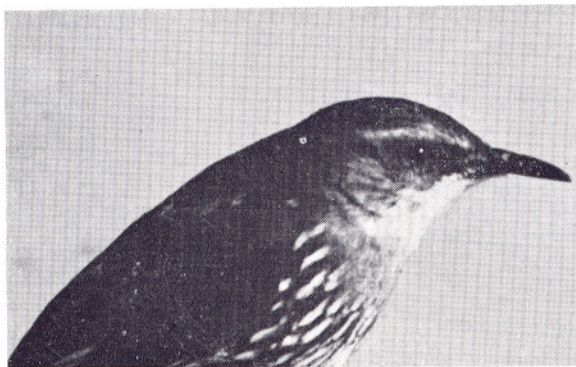
Immature male: General colour brownish black. Throat whitish, with some dark streaks.



ALLIED TREECREEPER

Climacteris wellsi

Sex differences as *C. melanura*. Immature not recorded.



• *Red-browed Treecreeper (male).*

Photo: S. G. Lane



• *Brown Treecreeper (female) at nesting hollow.*

Photo: A. J. Elliott



• *White-throated Treecreeper (male) with food for nestlings.*

Photo: A. J. Elliott