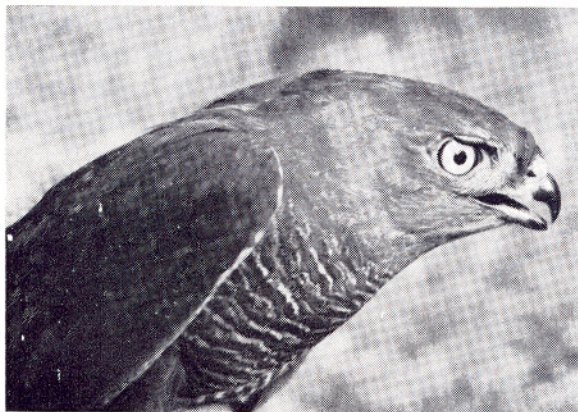


## BROWN GOSHAWK



- *Brown Goshawk—adult male (top) and immature male.*

Photos: S. G. Lane

## Brown Goshawk *Accipiter fasciatus*

The similarity in appearance and overlap in size between this species and the Collared Sparrowhawk can make identification difficult. Confusion is most likely between the male Brown Goshawk and the female Collared Sparrowhawk because they are the same size. Distinguishing characters for the Goshawk follow.

*Tail:* Rounded (a good field character).

*Tarsus:* Thick.

*Middle toe:* Third joint level with or shorter than base of claw of outer toe.

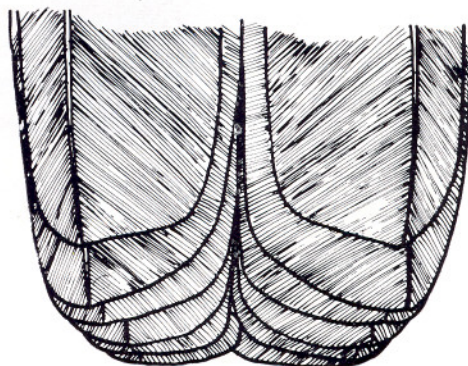
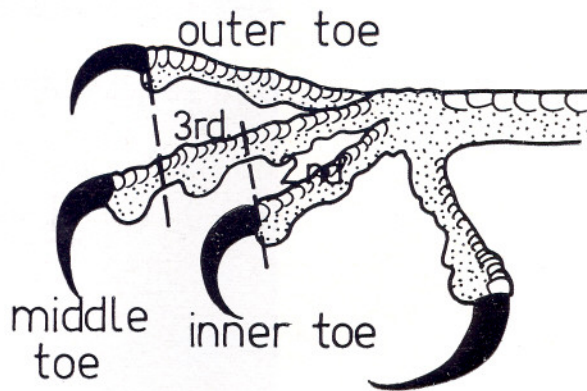
*Inner toe:* Base of claw halfway between 2nd and 3rd joints of middle toe.

### Measurements

	FEMALES	MALES
<i>Total length:</i>	457-558 mm	381-438 mm
<i>Tail:</i>	240-254 mm	191-216 mm
<i>Wing:</i>	285-318 mm	247-269 mm

Only adult birds can be sexed by size, as there is some overlap of measurements between the sexes in immature birds.

**NOTE:** *The illustrations are life size from dried museum skins, so that the tarsus and toes may be slightly larger in live birds.*



Drawings by D. Milledge