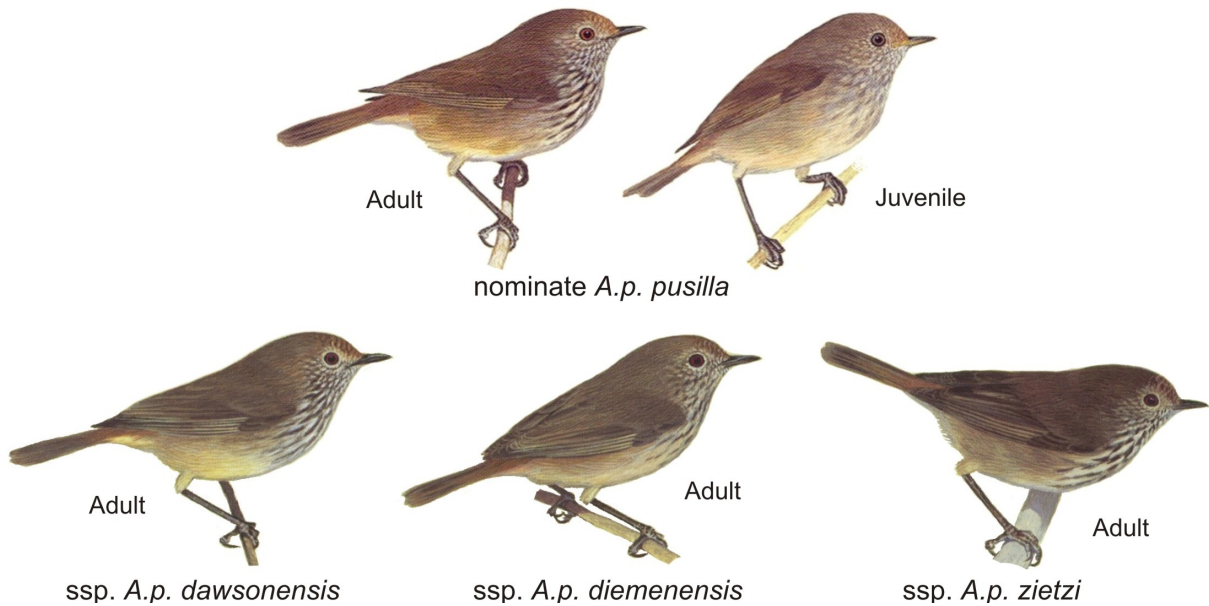


Brown Thornbill *Acanthiza pusilla* Species No.: 475 Band size: 01 AY

(1 of 2)



Status:

Six subspecies recognised (four illustrated) – nominate *A.p. pusilla* (coastal s-e Aust & ranges); *ssp. A.p. dawsonensis* (central e. Qld); *ssp. A.p. diemenensis* (Tas); *A.p. magnirostris* (King Is.); *A.p. samueli* (SA); & *A.p. zietzi* (Kangaroo Is.).

Morphometrics:

Size difference between the subspecies is insignificant. The measurements below are for *A.p. pusilla*.

	Adult Male	Adult Female
Wing:	47 – 56 mm	47 – 53 mm
Tail:	40 – 50 mm	34 – 46 mm
THL:	25.5 – 27.1 mm	
Bill:	9.5 – 12.1 mm	9.5 – 11.8 mm
Tarsus:	18.7 – 22.1 mm	16.9 – 20.8 mm
Weight :	6.0 – 8.0 g	5.0 – 8.4 g

Ageing:

	Adult (1+)	Immature/Juvenile (1)
Bill:	black with pale cream base to lower mandible;	blackish grey with yellowish base to lower mandible;
Gape:	black;	yellow fading to cream;
Palate:	black;	yellow;
Eye:	claret red or reddy-brown;	muddy brown;
Forehead:	boldly scalloped;	scalloping absent or faint;
Throat & breast:	heavily streaked;	clear buff with faint streaks;
Coverts:	olive fringes;	brownish fringes

Sexing:

Not size or plumage dimorphic;
Only females develop a brood patch.

Similar species:

Very similar to Inland Thornbill *Acanthiza apicalis* and their ranges overlap in s-e SA, n-w Victoria west of the divide in NSW and s-e Qld. Also, *ssp. A.p. diemensis* could visually be confused with the Tasmanian Thornbill *A. ewingii*.

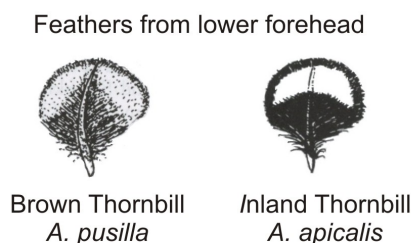
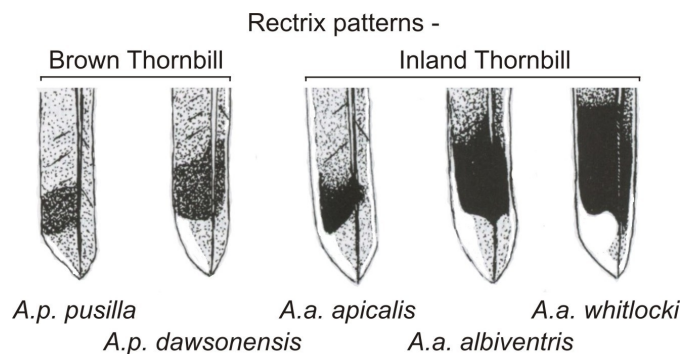
The differences between these species are explained below:

Brown Thornbill

(2 of 2)

Brown & Inland Thornbills:

The Brown Thornbill can be separated from the Inland Thornbill by differences in patterns of sub-terminal bands on rectrices and the patterns on feathers from the lower forehead as shown in the diagrams below:



Brown and Tasmanian Thornbills:

Basic plumage and size comparisons are:

	Brown Thornbill <i>(A.p. diemenensis)</i>	Tasmanian Thornbill <i>(A. ewingii)</i>
Forehead:	russet brown with distinct buff or light brown scalloping;	dull rufous brown with indistinct dark grey scalloping;
Throat & breast:	heavily streaked;	faint streaking;
Rump & upper tail coverts:	brown;	rufous-brown;
Undertail coverts:	buff;	off-white to white;
Outer web to primaries:	off-white to buff;	rufous-brown to rufous;
Wing:	47 – 57 mm	48 – 56 mm
Tail:	37 – 51 mm	41 – 54 mm
Bill:	10.3 – 13.9 mm	9.6 – 12.0 mm
Tarsus:	16.9 – 22.1 mm	18.3 – 23.1 mm